

## Background

The Moving Ahead for Progress in the 21<sup>st</sup> Century Act (MAP-21) requires State DOTs and MPOs to conduct performance-based planning by tracking performance measures and setting data-driven targets to improve those measures. Performance-based planning ensures the most efficient investment of federal transportation funds by increasing accountability, transparency, and providing for better investment decisions that focus on key outcomes related to seven national goals:

- Safety;
- Infrastructure preservation;
- Congestion reduction;
- System reliability;
- Freight movement and economic vitality;
- Environmental sustainability; and,
- Reduced project delivery delays.

The Fixing America's Surface Transportation (FAST) Act supplements the MAP-21 legislation by establishing timelines for State DOTs and MPOs to comply with the requirements of MAP-21.

Safety is the first national goal identified in the FAST Act. In March of 2016, the Highway Safety Improvement Program and Safety Performance Management Measures Rule (Safety PM Rule) was finalized and published in the *Federal Register*. The rule requires MPOs to set targets for the following safety-related performance measures and report progress to the State DOT:

- Fatalities;
- Serious Injuries;
- Nonmotorized Fatalities and Serious Injuries;
- Rate of Fatalities per 100M Vehicle Miles Traveled (VMT); and
- Rate of Serious Injuries per 100M VMT.

The Federal Highway Administration (FHWA) requires the Hillsborough MPO to establish safety targets and report progress toward achieving those targets on an annual basis, beginning on February 27, 2018. The Hillsborough MPO may either agree to plan and program projects so that they contribute toward the accomplishment of the FDOT targets or establish its own quantifiable performance targets for the metropolitan planning area for calendar year 2018 (January 1, 2018 – December 31, 2018). State DOTs and MPOs are able, however, to revise and adjust targets on an annual basis.

### Florida DOT Safety Targets

In August of 2017, the FDOT declared the State's safety performance targets as follows:

Safety Measure	CY2018 Target
Number of Fatalities	0
Number of Serious Injuries	0
Nonmotorized Fatalities and Serious Injuries	0
Rate of Fatalities per 100M VMT	0
Rate of Serious Injuries per 100M VMT	0

These annual targets are expressed as five-year rolling averages, comprising the five calendar years ending prior to the year the targets are due.

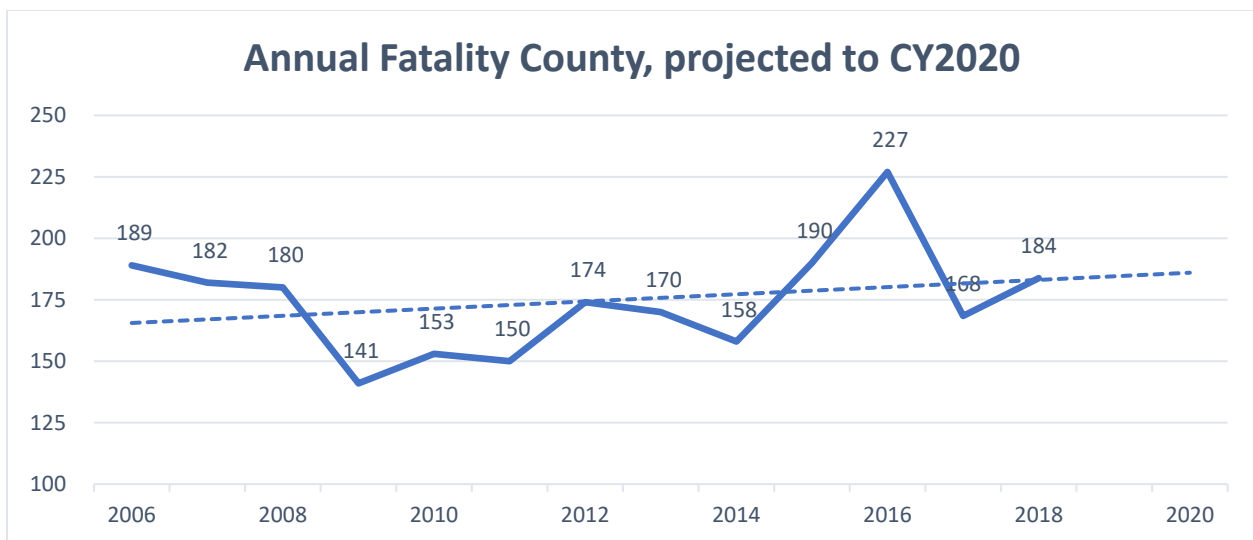
### Hillsborough MPO Safety Targets

In preparation for the initial safety target-setting effort, to be concluded by February 27, 2018, coordinated target-setting among the FHWA, FDOT, and Hillsborough MPO occurred through a series of webinars, target-setting workshops, teleconferences, and a meeting of the Florida Metropolitan Planning Partnership.

The Hillsborough MPO has committed to a quantifiable target<sup>1,2</sup> for each of the safety-related performance measures, and are declared as follows:

Safety Measure	CY2018 Target
Number of Fatalities	184
Number of Serious Injuries	1,618
Nonmotorized Fatalities and Serious Injuries	243
Rate of Fatalities per 100M VMT	1.40
Rate of Serious Injuries per 100M VMT	12.35

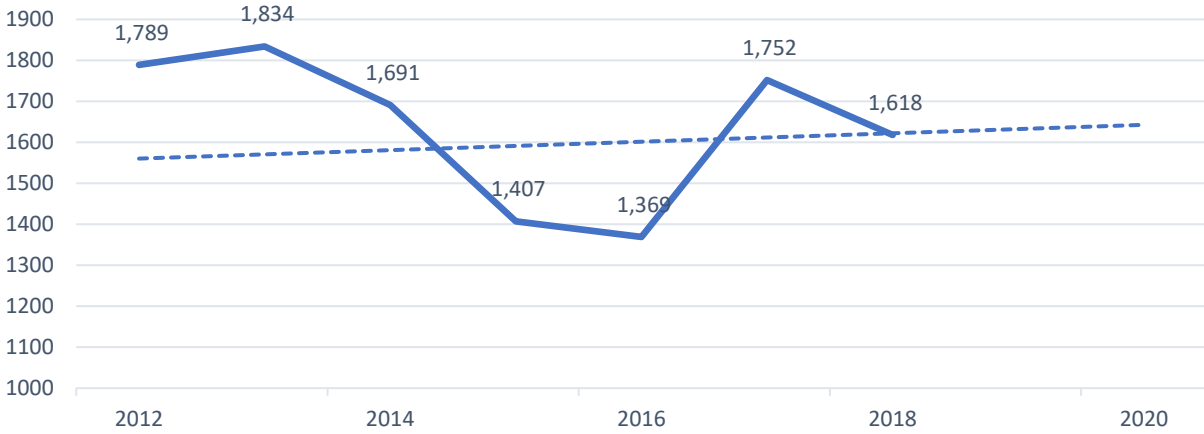
All five targets are linear projections made for CY2018 using five years of historical data on a rolling average, beginning in 2012 and ending in 2016, which is consistent with Federal reporting requirements. The targets apply to all public roads in the designated Metropolitan Planning Area of Hillsborough County.



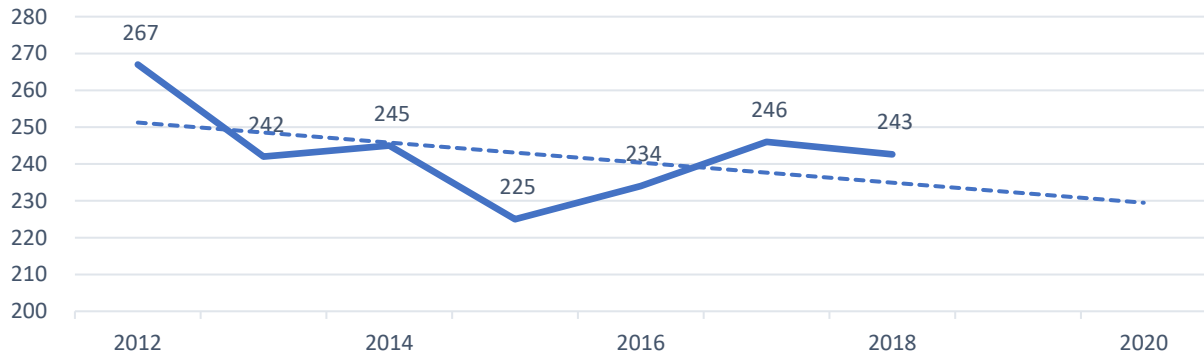
<sup>1</sup>The VMT estimate is published by the FDOT Office of Transportation Data and Analytics on an annual basis, <http://www.fdot.gov/planning/statistics/mileage-rpts/>.

<sup>2</sup> Fatality and serious injury counts are published by the FDOT State Safety Office's Crash Analysis Reporting (CAR) database. Figures used were current as of October 2, 2017.

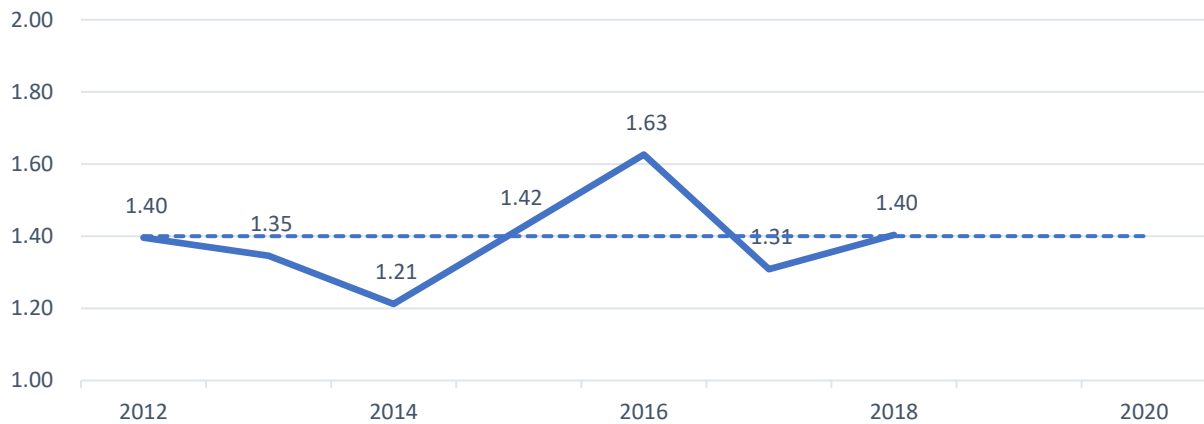
### Annual Serious Injury Count, projected to CY2020

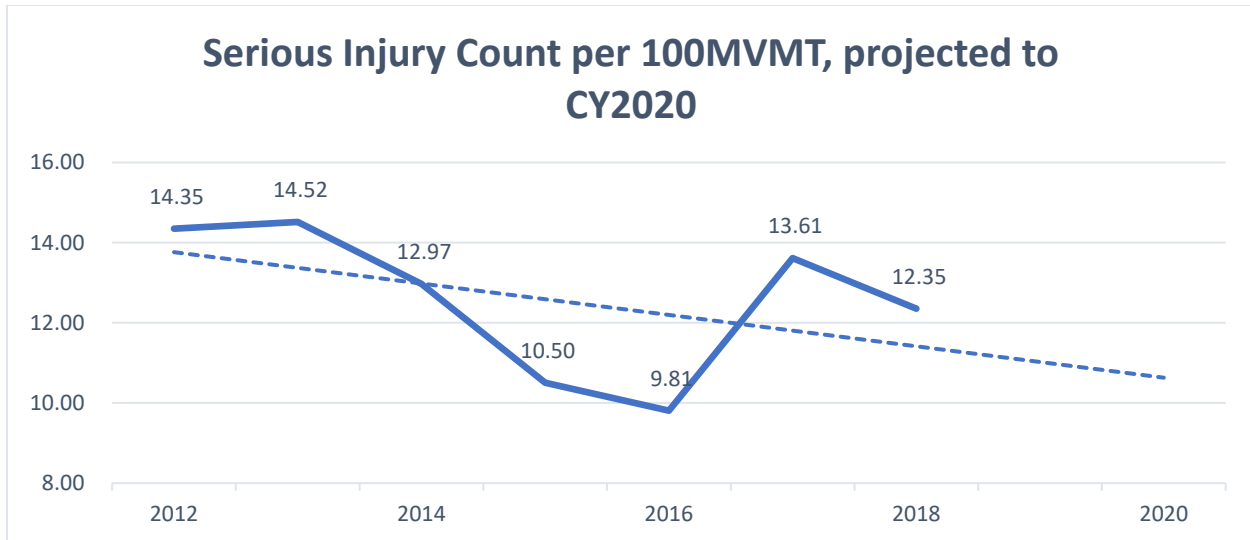


### Nonmotorized Fatal and Serious Injury Counts, projected to CY2020



### Fatality Rate per 100MVMT, projected to CY2020





### Progress Toward Targets

The investment priorities of the Hillsborough MPO are outlined in the Transportation Improvement Program (TIP). The TIP Priorities consider candidate projects that fall into one of five investment programs established by the *Imagine 2040 Long Range Transportation Plan*, including *Reduce Crashes & Vulnerability*, which evaluates projects that have the anticipated effect of reducing both total crashes, and fatal and nonmotorized crashes. The MPO's goal of reducing crashes by 21-50% (to achieve a level comparable to peer cities by 2040) is linked to this investment program.

By making *Reduce Crashes & Vulnerability* the MPO's second highest priority – following only *System Preservation* – Surface Transportation Block Grant (STBG) funds are now frequently allocated toward safety projects, and priorities are determined based on crash history. There are several STBG-funded safety projects in the FY2017-18 TIP, including the following, and more on the priority list to be considered next year:

- Floribraska Ave from N Tampa St to Nebraska Ave;
- E Columbus Dr from N Nebraska Ave to 14<sup>th</sup> St;
- N Rome Ave from W Kennedy Blvd to W Columbus Dr;
- 46<sup>th</sup> St from SR580/Busch Blvd to SR582/Fowler Ave;
- Old Big Bend Rd from E of Covington Garden Dr to E of East Bay HS;
- US92/SR580/Hillsborough Ave from Town 'n' Country Blvd to E of Dale Mabry Hwy; and,
- Several projects related to Safe Routes to School.

The Hillsborough MPO has furthermore approved the expenditure of \$14.4M in Highway Safety Improvement Program (HSIP) funds to support safety projects in 2018, and has adopted a Vision Zero Action Plan with a long-term goal of achieving zero traffic fatalities. HSIP projects include:

- 34<sup>th</sup> St N from Columbus Dr to US92/Hillsborough Ave;
- Himes Ave from SR60/Kennedy Blvd to Columbus Dr;
- US41/SR45/50<sup>th</sup> St from Denver St to N of S 30<sup>th</sup> Ave;
- Morris Bridge Rd from Fletcher Ave to Fowler Ave;
- Morris Bridge Rd from Davis Rd to Fowler Ave; and,
- Green Spine Cycle Track PH 2B from Willow Ave to Doyle Carlton Dr.