

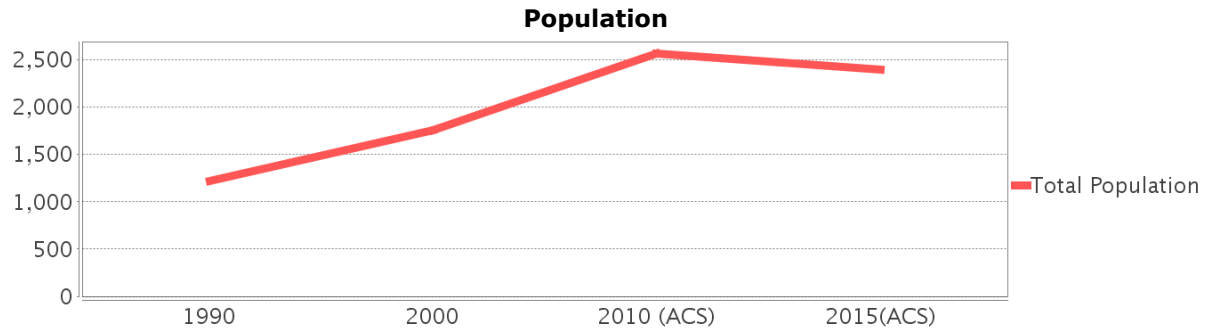
Sociocultural Data Report

Citrus Park Village

Area: 1.287 square miles
Jurisdiction(s): Cities: NA
 Counties: Hillsborough

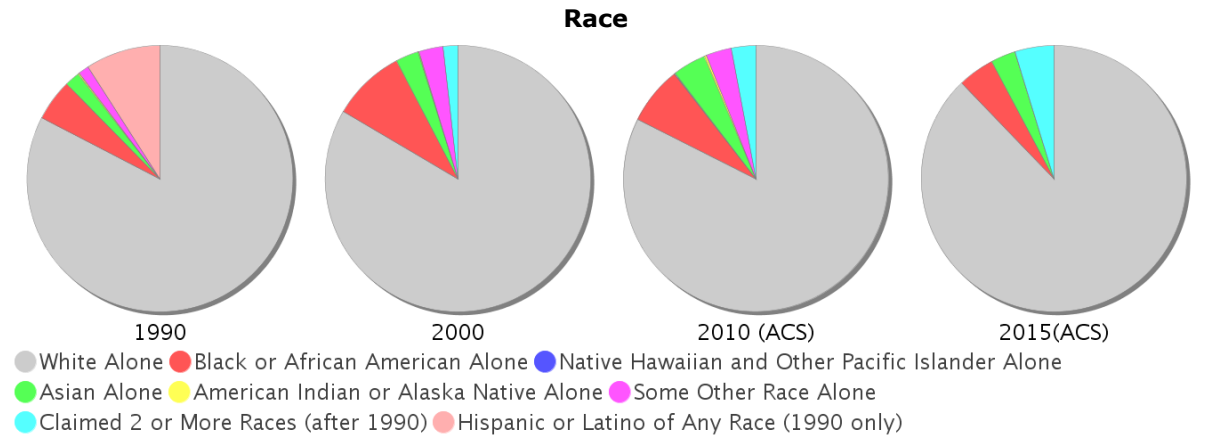
General Population Trends

Description	1990	2000	2010 (ACS)	2015 (ACS)
Total Population	1,217	1,756	2,562	2,394
Total Households	435	663	978	939
Average Persons per Acre	1.15	1.73	2.26	2.21
Average Persons per Household	2.87	2.71	2.80	2.88
Average Persons per Family	3.17	3.09	3.00	3.32
Males	594	897	1,231	1,179
Females	623	859	1,331	1,215

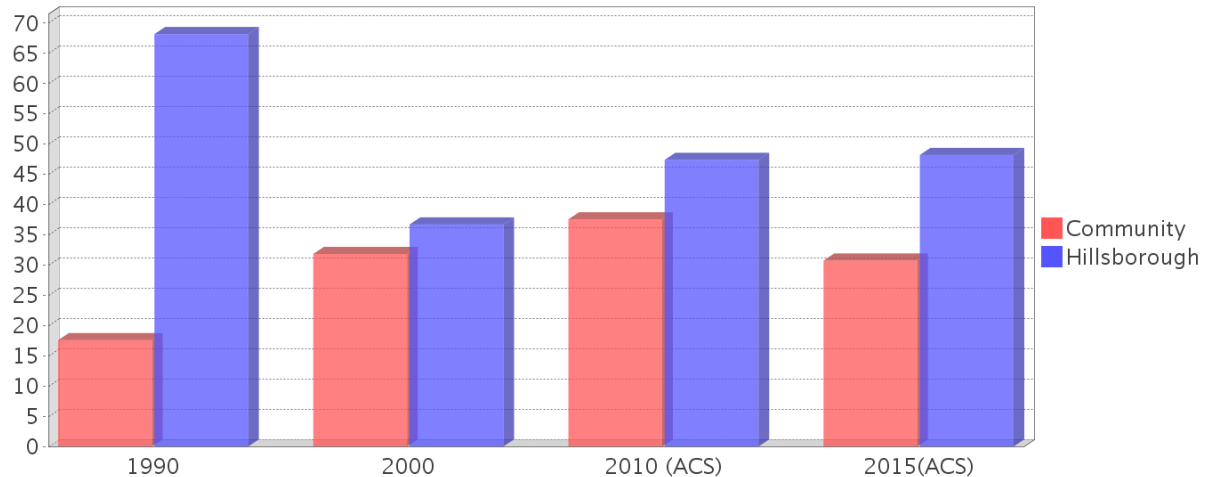


Race and Ethnicity Trends

Description	1990	2000	2010 (ACS)	2015 (ACS)
White Alone	1,106 (90.88%)	1,466 (83.49%)	2,111 (82.40%)	2,102 (87.80%)
Black or African American Alone	68 (5.59%)	156 (8.88%)	182 (7.10%)	106 (4.43%)
Native Hawaiian and Other Pacific Islander Alone	0 (0.00%)	0 (0.00%)	1 (0.04%)	0 (0.00%)
Asian Alone	24 (1.97%)	50 (2.85%)	104 (4.06%)	72 (3.01%)
American Indian or Alaska Native Alone	3 (0.25%)	2 (0.11%)	8 (0.31%)	0 (0.00%)
Some Other Race Alone	17 (1.40%)	52 (2.96%)	80 (3.12%)	1 (0.04%)
Claimed 2 or More Races	NA (NA)	31 (1.77%)	76 (2.97%)	114 (4.76%)
Hispanic or Latino of Any Race	122 (10.02%)	348 (19.82%)	639 (24.94%)	478 (19.97%)
Not Hispanic or Latino	1,095 (89.98%)	1,408 (80.18%)	1,923 (75.06%)	1,916 (80.03%)
Minority	214 (17.58%)	559 (31.83%)	962 (37.55%)	736 (30.74%)



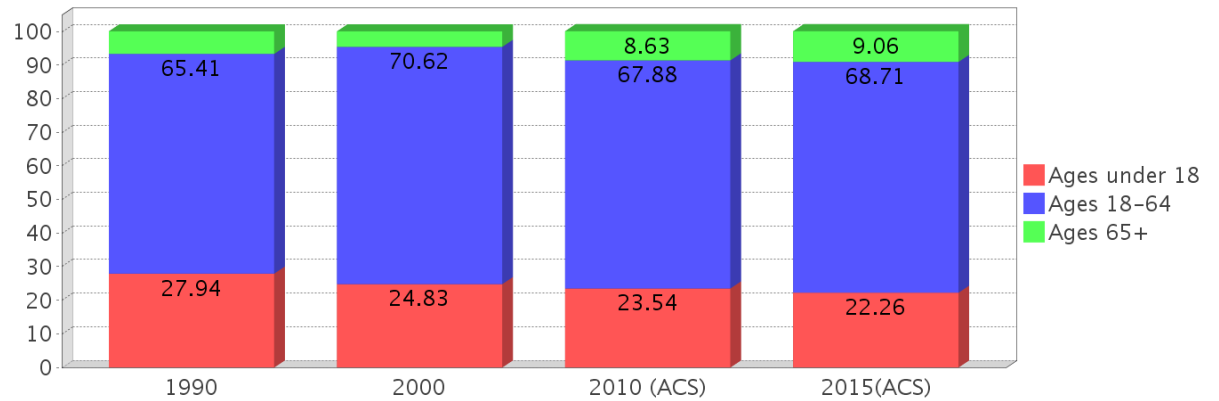
Minority Percentage Population



Age Trends

Description	1990	2000	2010 (ACS)	2015(ACS)
Under Age 5	9.86%	9.40%	5.15%	3.68%
Ages 5-17	18.08%	15.43%	18.38%	18.59%
Ages 18-21	4.03%	3.93%	5.04%	2.88%
Ages 22-29	14.05%	13.15%	9.60%	8.35%
Ages 30-39	24.49%	21.87%	15.22%	17.88%
Ages 40-49	13.89%	18.68%	17.72%	15.33%
Ages 50-64	8.96%	12.98%	20.30%	24.27%
Age 65 and Over	6.66%	4.56%	8.63%	9.06%
-Ages 65-74	3.94%	3.36%	5.39%	5.60%
-Ages 75-84	1.89%	0.97%	2.65%	0.92%
-Age 85 and Over	0.82%	0.23%	0.55%	2.55%
Median Age	NA	34	40	40

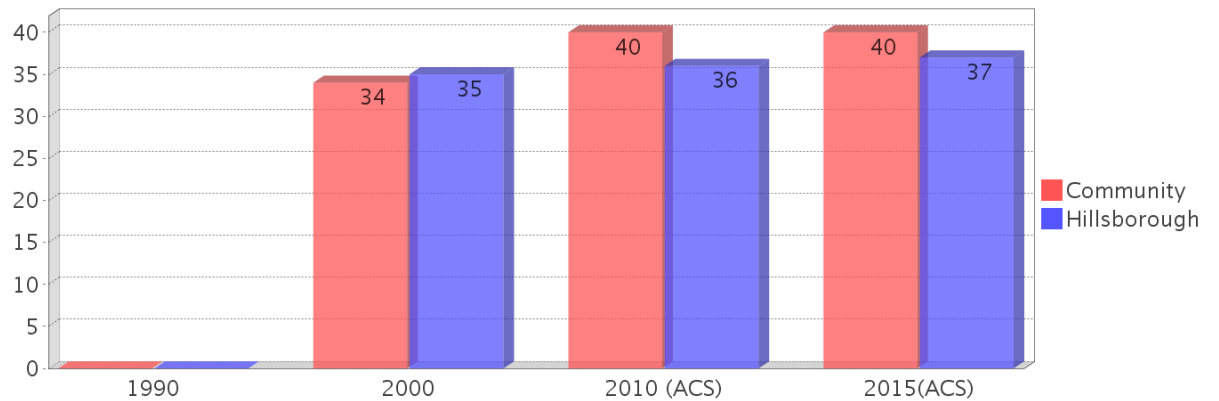
Population by Age Group



Income Trends

Description	1990	2000	2010 (ACS)	2015(ACS)
Median Household Income	\$42,000	\$69,798	\$71,495	\$106,518
Median Family Income	\$45,064	\$73,870	\$76,691	NA
Population below Poverty Level	3.86%	6.26%	5.35%	3.38%
Households below Poverty Level	3.68%	5.88%	4.40%	2.88%
Households with Public Assistance Income	2.07%	3.92%	4.19%	1.92%

Median Age Comparison

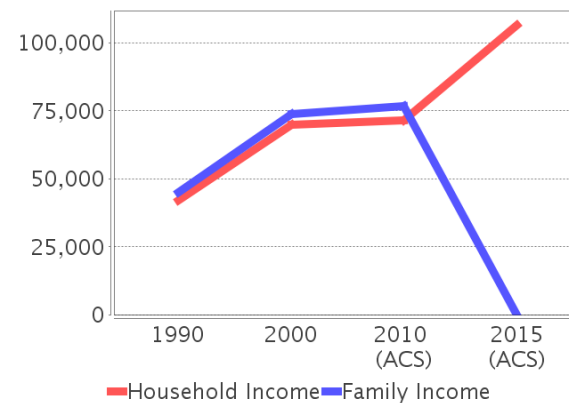


Disability Trends

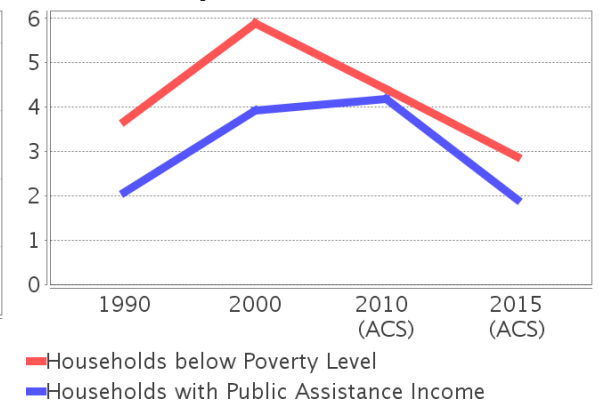
See the Data Sources section below for an explanation about the differences in disability data among the various years.

Description	1990	2000	2010 (ACS)	2015(ACS)
Population 16 To 64 Years with a disability	42 (4.77%)	196 (12.32%)	(NA)	(NA)
Population 20 To 64 Years with a disability	(NA)	(NA)	(NA)	175 (10.92%)

Income Trends



Poverty and Public Assistance



Educational Attainment Trends

Age 25 and Over

Description	1990	2000	2010 (ACS)	2015(ACS)
Less than 9th Grade	31 (4.03%)	40 (3.48%)	47 (2.99%)	20 (1.17%)
9th to 12th Grade, No Diploma	66 (8.57%)	130 (11.30%)	99 (6.29%)	43 (2.52%)
High School Graduate or Higher	673 (87.40%)	981 (85.30%)	1,428 (90.72%)	1,645 (96.31%)
Bachelor's Degree or Higher	211 (27.40%)	409 (35.57%)	602 (38.25%)	672 (39.34%)

Language Trends

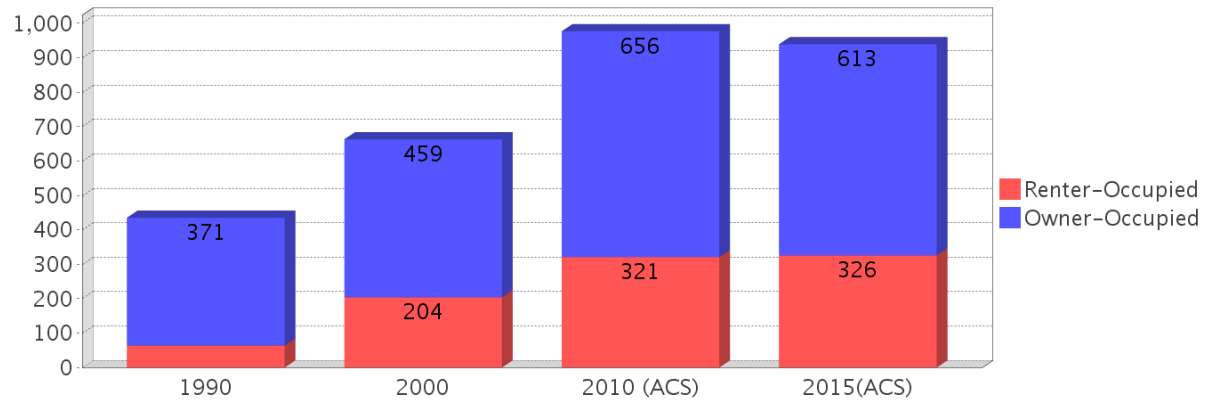
Age 5 and Over

Description	1990	2000	2010 (ACS)	2015(ACS)
Speaks English Well	43 (3.93%)	51 (3.21%)	42 (1.99%)	47 (2.04%)
Speaks English Not Well	NA (NA)	26 (1.63%)	106 (5.02%)	38 (1.65%)
Speaks English Not at All	NA (NA)	11 (0.69%)	30 (1.42%)	24 (1.04%)
Speaks English Not Well or Not at All	12 (1.10%)	37 (2.33%)	136 (6.44%)	62 (2.69%)

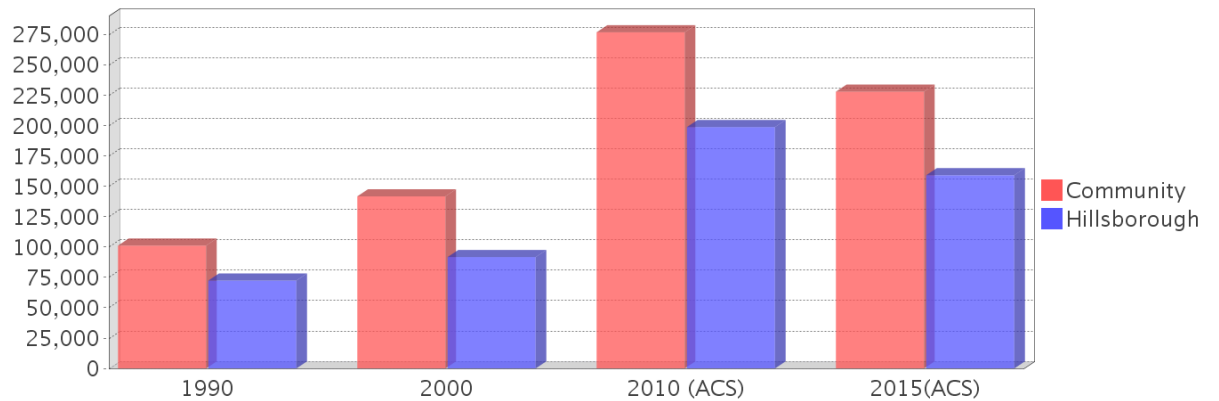
Housing Trends

Description	1990	2000	2010 (ACS)	2015(ACS)
Total	469	723	1,053	1,011
Units per Acre	0.55	0.86	1.15	1.11
Single-Family Units	397	543	772	755
Multi-Family Units	7	134	164	220
Mobile Home Units	30	45	69	36
Owner-Occupied Units	371	459	656	613
Renter-Occupied Units	64	204	321	326
Vacant Units	34	60	75	72
Median Housing Value	\$101,200	\$141,800	\$277,000	\$228,100
Occupied Housing Units w/No Vehicle	17 (3.91%)	18 (2.71%)	12 (1.23%)	8 (0.85%)

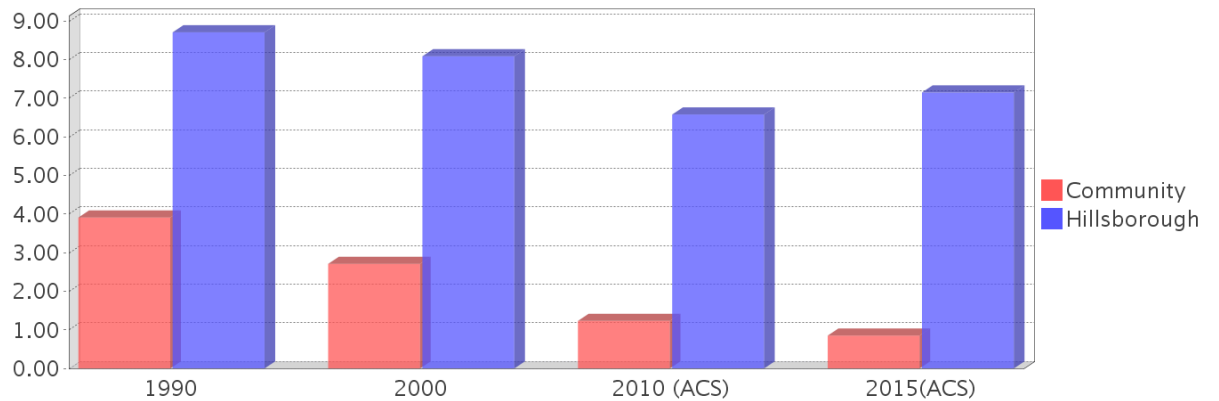
Housing Tenure



Median Housing Value Comparison

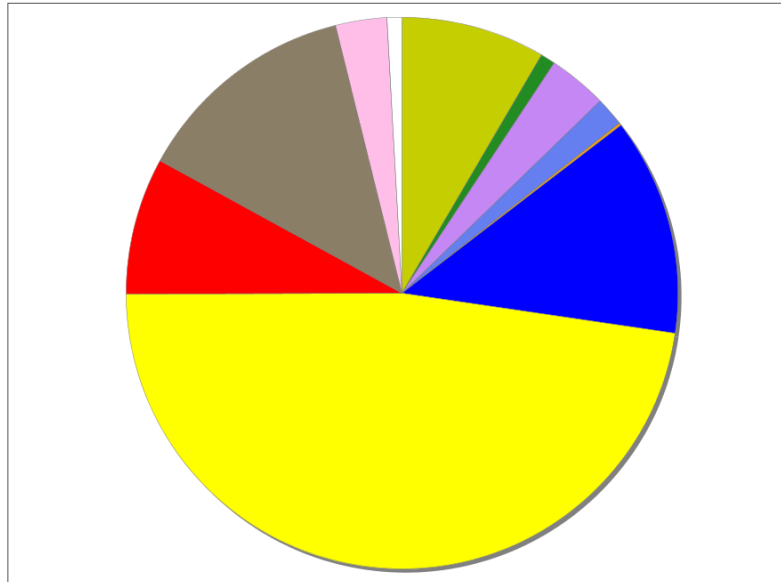


Occupied Units With No Vehicles Available



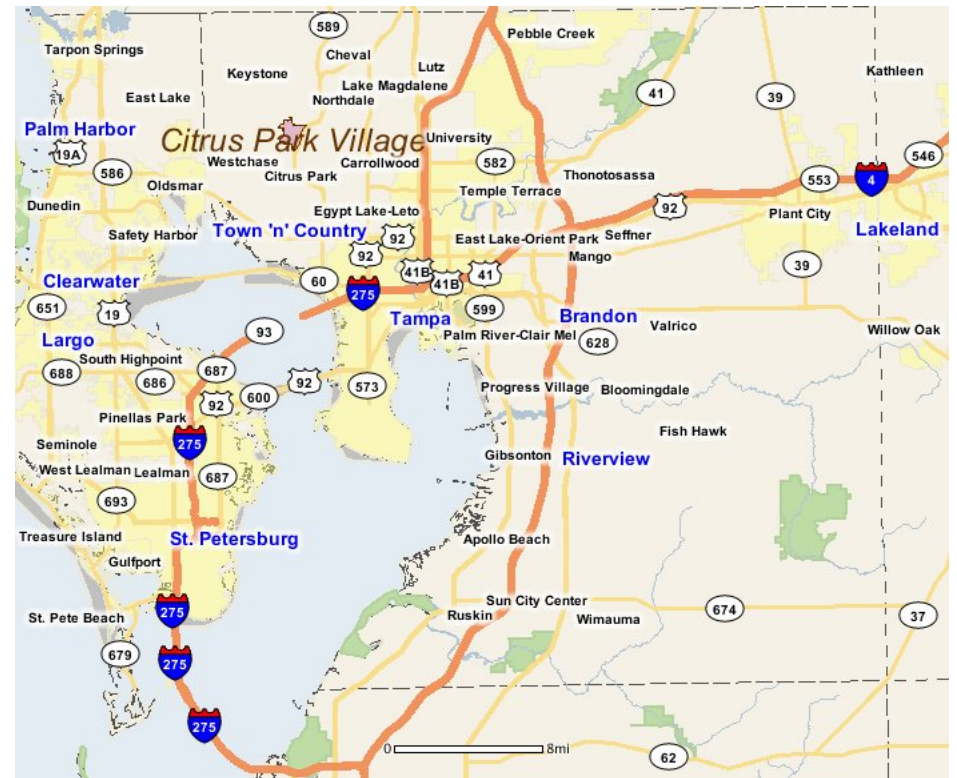
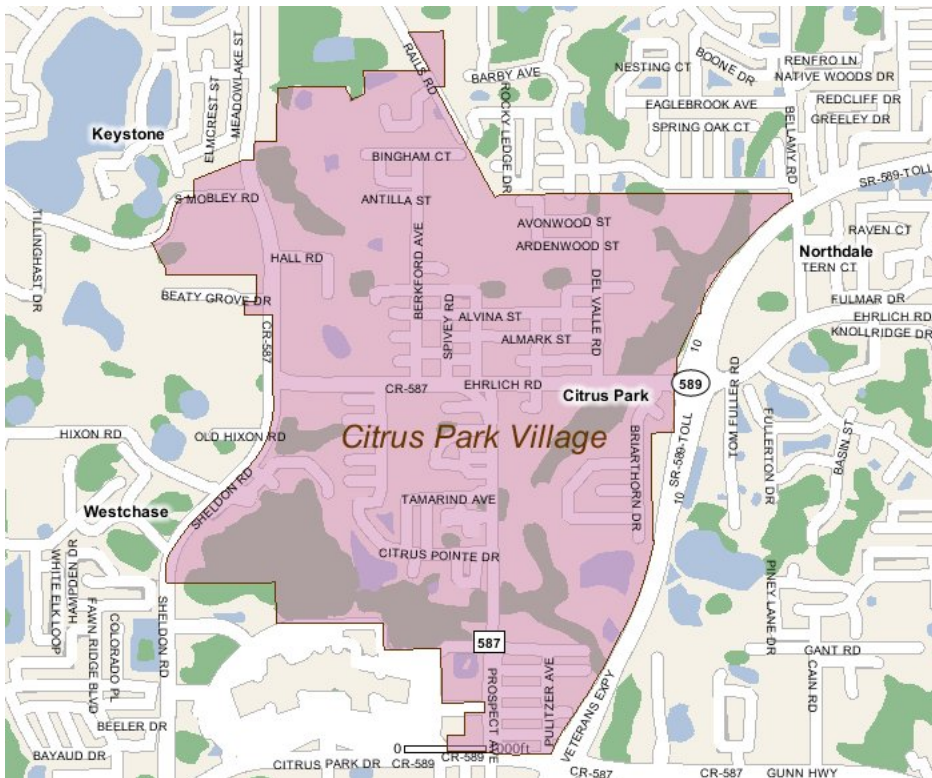
Existing Land Use

Land Use Type	Acres	Percentage
Acreage Not Zoned For Agriculture	59	7.16%
Agricultural	6	0.73%
Centrally Assessed	0	0.00%
Industrial	24	2.91%
Institutional	12	1.46%
Mining	0	0.00%
Other	1	0.12%
Public/Semi-Public	89	10.81%
Recreation	0	0.00%
Residential	333	40.43%
Retail/Office	56	6.80%
Row	<0.5	<0.06%
Vacant Residential	92	11.17%
Vacant Nonresidential	21	2.55%
Water	0	0.00%
Parcels With No Values	6	0.73%



- Acreage Not Zoned For Agriculture
- Agricultural
- Centrally Assessed
- Industrial
- Institutional
- Mining
- Other
- Public/Semi-Public
- Recreation
- Residential
- Retail/Office
- Row
- Vacant Residential
- Vacant Nonresidential
- Water
- Parcels With No Values

Location Maps



Community Facilities

The community facilities information below is useful in a variety of ways for environmental evaluations. These community resources should be evaluated for potential sociocultural effects, such as accessibility and relocation potential. The facility types may indicate the types of population groups present in the project study area. Facility staff and leaders can be sources of community information such as who uses the facility and how it is used. Additionally, community facilities are potential public meeting venues.

Community Boundaries (User defined)

Facility Name

Northwest Hillsborough

Greater Carrollwood Northdale

Citrus Park Village

Community Centers (Points)

Facility Name

DELTA SIGMA THETA SORORITY ORLANDO
ALUMNAE CHAPTER

Address

8106 COLONIAL VILLAGE DR

Zip Code

33625

Fire Stations (Points)

Facility Name

GUNN HIGHWAY FIRE DEPARTMENT AND RESCUE
STATION 13

Address

7502 GUNN HWY

Zip Code

33625

Florida Parks and Recreational Facilities (Points)

Facility Name

CITRUS PARK

Address

7808 ALEMA ST

Zip Code

33625

Healthcare Facilities (Geocoded)

Facility Name

NORMAN ROBERT A DO

Address

8002 GUNN HIGHWAY

Zip Code

33626

Law Enforcement Facilities (Points)

Facility Name

HILLSBOROUGH COUNTY SHERIFF'S OFFICE
DISTRICT III

Address

7202 GUNN HWY

Zip Code

33625

Public and Private Schools (Points)

Facility Name

SERGEANT PAUL R SMITH MIDDLE SCHOOL

Address

14303 CITRUS POINTE DR

Zip Code

33625

CITRUS PARK ELEMENTARY SCHOOL

7700 GUNN HIGHWAY

33625

CITRUS PARK CHRISTIAN SCHOOL

7705 GUNN HIGHWAY

33625

Religious Centers (Points)

Facility Name

THE CHURCH OF JESUS CHRIST OF LATTER DAY
SAINTS - TAMPA 4TH WARD

Address

8020 GUNN HIGHWAY

Zip Code

33626

FAITH FAMILY WORSHIP CENTER

14514 DEL VALLE ROAD

33625

FIRST BAPTIST CHURCH OF CITRUS PARK

7705 GUNN HIGHWAY

33625

US Census Places

Facility Name

Westchase

Citrus Park

Keystone

Block Groups

The following Census Block Groups were used to calculate demographics for this report.

1990 Census Block Groups

120570114041, 120570115014, 120570114042, 120570114031, 120570115015

2000 Census Block Groups

120570115054, 120570115062, 120570114121, 120570114101

2010 Census Block Groups

120570114121, 120570114101, 120570114103, 120570115183, 120570115062

2015 Census Block Groups

120570115183, 120570114101, 120570115062, 120570114121, 120570114103

Data Sources

Area

The geographic area of the community based on a user-specified community boundary or area of interest (AOI) boundary.

Jurisdiction

Jurisdiction(s) includes local government boundaries that intersect the community or AOI boundary.

Demographic Data

Demographic data reported under the headings General Population Trends, Race and Ethnicity Trends, Age Trends, Income Trends, Educational Attainment Trends, Language Trends, and Housing Trends is from the U.S. Decennial Census (1990, 2000) and the American Community Survey (ACS) 5-year estimates from 2006-2010 and 2011-2015. The data was gathered at the block group level for user-specified community boundaries and AOIs, and at the county level for counties. Depending on the dataset, the data represents 100% counts (Census Summary File 1) or sample-based information (Census Summary File 3 or ACS).

About the Census Data:

User-specified community boundaries and AOIs do not always correspond precisely to block group boundaries. In these instances, adjustment of the geographic area and data for affected block groups is required to estimate the actual population. To improve the accuracy of such estimates in the SDR report, the census block group data was adjusted to exclude all census blocks with a population of two or fewer. These areas were eliminated from the corresponding years' block groups. Next, the portion of the block group that lies outside of the community or AOI boundary was removed. The demographics within each block group were then recalculated, assuming an equal area distribution of the population. Note that there may be areas where there is no population.

Use caution when comparing the 100% count data (Decennial Census) to the sample-based data (ACS). In any given year, about one in 40 or 2.5% of U.S. households will receive the ACS questionnaire. Over any five-year period, about one in eight households will receive the questionnaire, as compared to about one in six that received the long form questionnaire for the Decennial Census 2000. (Source: <http://mcdc.missouri.edu/pub/data/acs/Readme.shtml>) The U.S. Census Bureau provides help with this process:

http://www.census.gov/acs/www/guidance_for_data_users/comparing_2015/

Use caution when interpreting changes in Race and Ethnicity over time. Starting with the 2000 Decennial Census, respondents were given a new option of selecting one or more race categories. Also in 2000, the placement of the question about Hispanic origin changed, helping to increase responsiveness to the Hispanic-origin question. Because of these and other changes, the 1990 data on race and ethnicity are not directly comparable with data from later censuses. (Source: <http://www.census.gov/prod/2001pubs/c2kbr01-1.pdf>; <http://www.census.gov/pred/www/rpts/Race%20and%20Ethnicity%20FINAL%20report.pdf>)

The "Minority" calculations are derived from Census and ACS data using both the race and ethnicity responses. On this report, "Minority" refers to individuals who list a race other than White and/or list their ethnicity as Hispanic/Latino. In other words, people who are multi-racial, any single race other than White, or Hispanic/Latino of any race are considered minorities.

Disability data is not included in the 2010 Decennial Census, or the 2006-2010 ACS. This data is available in the 2011-2015 ACS.

Because of changes made to the Census and ACS questions between 1990 and 2015, disability variables should not be compared from year to year. For example: 1) With the 1990 data the disabilities are listed as a "work disability" while this distinction is not made with 2000 or 2015 ACS data; 2) The 2015 ACS data includes the institutionalized population (e.g. persons in prisons and group homes), while this population is not included in 1990 or 2000; 3) the age groupings changed over the years.

Please take the following two concerns into account when viewing this data: 1) With the 1990 data the disabilities are listed as a "work disability" while this distinction is not made with 2000 or 2015 ACS data; 2) The 2015 ACS data includes the institutionalized population (e.g. persons in prisons and group homes), while this population is not included in 1990 or 2000.

The category Bachelor's Degree or Higher under the heading Educational Attainment Trends is a subset of the category High School Graduate or Higher.

Income of households. This includes the income of the householder and all other individuals 15 years old and over in the household, whether they are related to the householder or not. Because many households consist of only one person, average household income is usually less than average family income.

Income of families. In compiling statistics on family income, the incomes of all members 15 years old and over related to the householder are summed and treated as a single amount.

Age Trends median age for 1990 is not available.

Land Use Data

The Land Use information Indicates acreages and percentages for the generalized land use types used to group parcel-specific, existing land use assigned by the county property appraiser office according to the Florida Department of Revenue land use codes.

Community Facilities Data

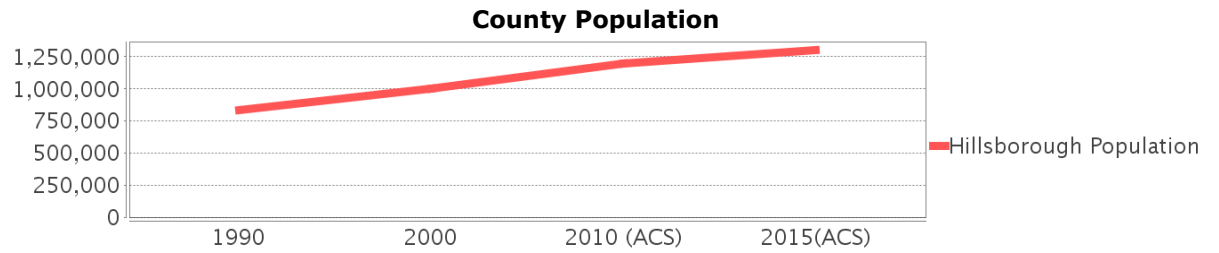
- Assisted Rental Housing Units - Identifies multifamily rental developments that receive funding assistance under federal, state, and local government programs to offer affordable housing as reported by the Shimberg Center for Housing Studies, University of Florida.
- Mobile Home Parks - Identifies approved or acknowledged mobile home parks reported by the Florida Department of Business and Professional Regulation and Florida Department of Health.
- Migrant Camps - Identifies migrant labor camp facilities inspected by the Florida Department of Health.
- Group Care Facilities - Identifies group care facilities inspected by the Florida Department of Health.
- Community Center and Fraternal Association Facilities - Identifies facilities reported by multiple sources.
- Law Enforcement Correctional Facilities - Identifies facilities reported by multiple sources.

- Cultural Centers - Identifies cultural centers including organizations, buildings, or complexes that promote culture and arts (e.g., aquariums and zoological facilities; arboreta and botanical gardens; dinner theaters; drive-ins; historical places and services; libraries; motion picture theaters; museums and art galleries; performing arts centers; performing arts theaters; planetariums; studios and art galleries; and theater producers stage facilities) reported by multiple sources.
- Fire Department and Rescue Station Facilities - Identifies facilities reported by multiple sources.
- Government Buildings - Identifies local, state, and federal government buildings reported by multiple sources.
- Health Care Facilities - Identifies health care facilities including abortion clinics, dialysis clinics, medical doctors, nursing homes, osteopaths, state laboratories/clinics, and surgicenters/walk-in clinics reported by the Florida Department of Health.
- Hospital Facilities - Identifies hospital facilities reported by multiple sources.
- Law Enforcement Facilities - Identifies law enforcement facilities reported by multiple sources.
- Parks and Recreational Facilities - Identifies parks and recreational facilities reported by multiple sources.
- Religious Center Facilities - Identifies religious centers including churches, temples, synagogues, mosques, chapels, centers, and other types of religious facilities reported by multiple sources.
- Private and Public Schools - Identifies private and public schools reported by multiple sources.
- Social Service Centers - Identifies social service centers reported by multiple sources.
- Veteran Organizations and Facilities

Hillsborough County Demographic Profile

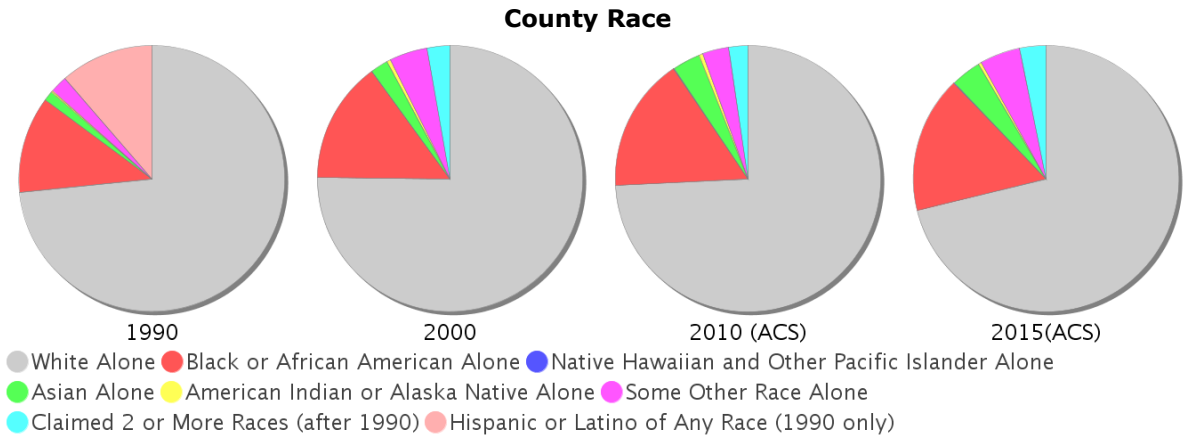
General Population Trends - Hillsborough

Description	1990	2000	2010 (ACS)	2015(ACS)
Total Population	834,054	998,948	1,200,236	1,302,884
Total Households	324,872	391,357	462,447	486,078
Average Persons per Acre	1.216	1.458	1.751	1.90
Average Persons per Household	2.567	2.508	3.00	2.64
Average Persons per Family	3.106	3.156	3.262	3.375
Males	406,217	488,596	585,512	635,632
Females	427,837	510,352	614,724	667,252



Race and Ethnicity Trends - Hillsborough

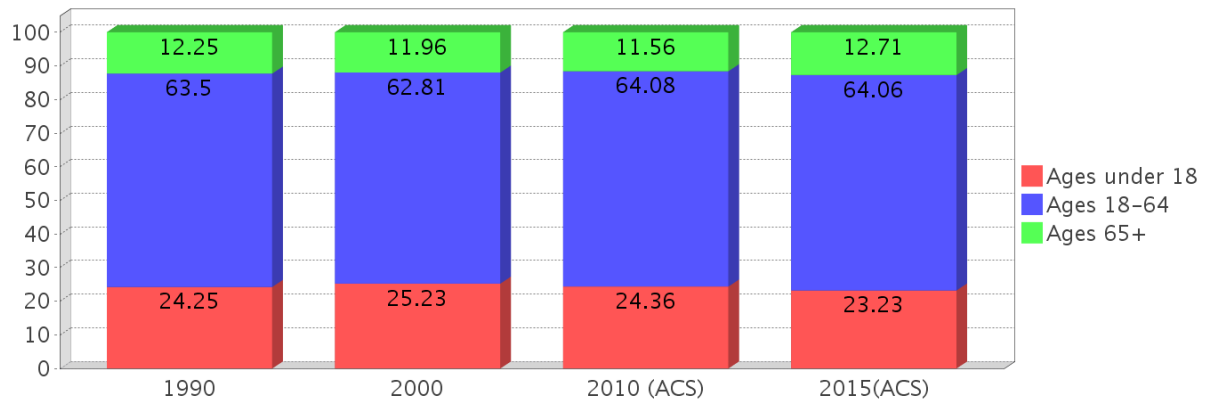
Description	1990	2000	2010 (ACS)	2015(ACS)
White Alone	690,352 (82.77%)	750,497 (75.13%)	890,392 (74.18%)	926,752 (71.13%)
Black or African American Alone	110,283 (13.22%)	147,966 (14.81%)	196,352 (16.36%)	216,735 (16.64%)
Native Hawaiian and Other Pacific Islander Alone	(NA)	540 (0.05%)	773 (0.06%)	1,061 (0.08%)
Asian Alone	11,093 (1.33%)	21,571 (2.16%)	40,285 (3.36%)	48,093 (3.69%)
American Indian or Alaska Native Alone	2,454 (0.29%)	4,175 (0.42%)	5,523 (0.46%)	4,665 (0.36%)
Some Other Race Alone	19,586 (2.35%)	46,587 (4.66%)	39,276 (3.27%)	64,340 (4.94%)
Claimed 2 or More Races	(NA)	27,612 (2.76%)	27,635 (2.30%)	41,238 (3.17%)
Hispanic or Latino of Any Race	106,908 (12.82%)	179,637 (17.98%)	286,394 (23.86%)	339,540 (26.06%)
Not Hispanic or Latino	727,146 (87.18%)	819,311 (82.02%)	913,842 (76.14%)	963,344 (73.94%)
Minority	568,661 (68.18%)	366,644 (36.70%)	568,661 (47.38%)	627,917 (48.19%)



Age Trends - Hillsborough

Description	1990	2000	2010 (ACS)	2015(ACS)
Under Age 5	7.30%	6.77%	6.70%	6.39%
Ages 5-17	16.95%	18.46%	17.66%	16.84%
Ages 18-21	5.96%	5.33%	5.91%	5.71%
Ages 22-29	14.20%	11.31%	11.83%	11.72%
Ages 30-39	17.39%	16.38%	13.93%	13.78%
Ages 40-49	12.95%	15.22%	15.18%	14.09%
Ages 50-64	13.00%	14.57%	17.23%	18.77%
Age 65 and Over	12.25%	11.96%	11.56%	12.71%
-Ages 65-74	7.41%	6.46%	6.21%	7.19%
-Ages 75-84	3.83%	4.20%	3.87%	3.87%
-Age 85 and Over	1.00%	1.29%	1.48%	1.65%
Median Age	NA	35	36	37

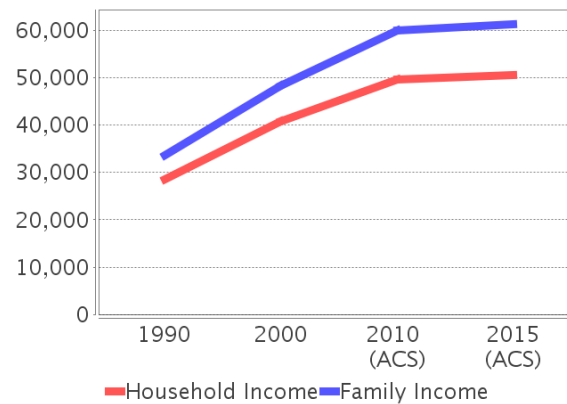
Percentage Population by Age Group



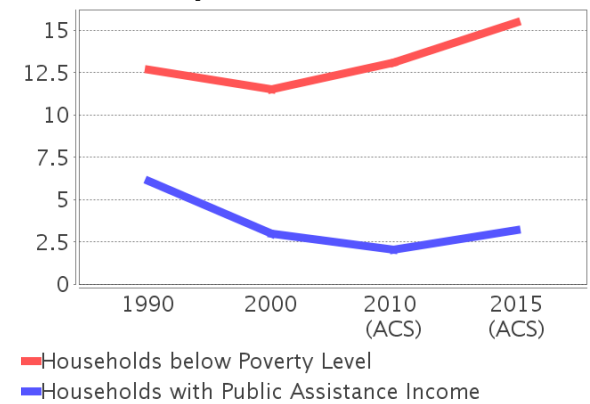
Income Trends - Hillsborough

Description	1990	2000	2010 (ACS)	2015(ACS)
Median Household Income	\$28,477	\$40,663	\$49,536	\$50,579
Median Family Income	\$33,645	\$48,223	\$59,886	\$61,262
Population below Poverty Level	13.29%	12.51%	14.17%	16.97%
Households below Poverty Level	12.66%	11.50%	13.11%	15.45%
Households with Public Assistance Income	6.07%	3.01%	2.06%	3.18%

Income Trends



Poverty and Public Assistance



Disability Trends - Hillsborough

See the Data Sources section below for an explanation about the differences in disability data among the various years.

Description	1990	2000	2010 (ACS)	2015(ACS)
Population 16 To 64 Years with a disability	48,345 (7.57%)	136,465 (14.85%)	NA (NA)	NA (NA)
Population 20 To 64 Years with a disability	NA (NA)	NA (NA)	NA (NA)	79,106 (9.96%)

Educational Attainment Trends - Hillsborough

Age 25 and Over

Description	1990	2000	2010 (ACS)	2015(ACS)
Less than 9th Grade	48,247	41,209	41,965	43,073
9th to 12th Grade, No Diploma	84,751	84,574	69,127	66,133
High School Graduate or Higher	412,022	528,058	672,988	762,685
Bachelor's Degree or Higher	110,070	164,109	226,113	266,437

Language Trends - Hillsborough

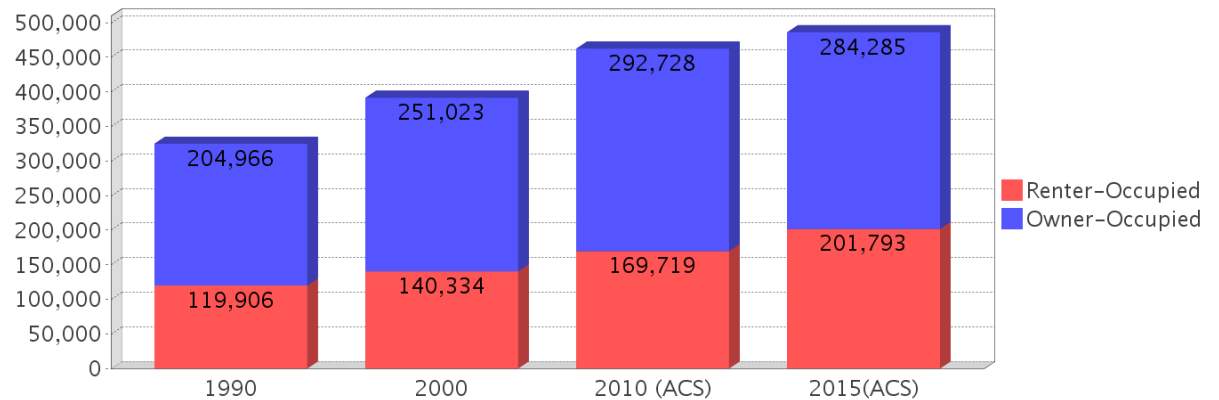
Age 5 and Over

Description	1990	2000	2010 (ACS)	2015(ACS)
Speaks English Well	23,611	39,227	54,355	50,719
Speaks English Not Well	NA	28,250	39,803	44,487
Speaks English Not at All	NA	13,819	19,950	24,627
Speaks English Not Well or Not at All	20,956	42,069	59,753	69,114

Housing Trends - Hillsborough

Description	1990	2000	2010 (ACS)	2015(ACS)
Total	367,740	425,962	526,016	549,024
Units per Acre	0.536	0.622	0.768	0.80
Single-Family Units	200,373	260,157	330,155	345,207
Multi-Family Units	87,418	122,837	153,087	161,555
Mobile Home Units	34,499	42,063	42,158	41,562
Owner-Occupied Units	204,966	251,023	292,728	284,285
Renter-Occupied Units	119,906	140,334	169,719	201,793
Vacant Units	42,868	34,605	63,569	62,946
Median Housing Value	\$72,400	\$91,800	\$198,900	\$159,200
Occupied Housing Units w/No Vehicle	28,289 (8.71%)	31,680 (8.09%)	30,440 (6.58%)	34,742 (7.15%)

Housing Tenure



County Data Sources

Demographic data reported is from the U.S. Decennial Census (1990, 2000) and the American Community Survey (ACS) 5-year estimates from 2006-2010 and 2011-2015. The data was gathered at the county level. Depending on the dataset, the data represents 100% counts (Census Summary File 1) or sample-based information (Census Summary File 3 or ACS).

About the Census Data:

Use caution when comparing the 100% count data (Decennial Census) to the sample-based data (ACS). In any given year, about one in 40 or 2.5% of U.S. households will receive the ACS questionnaire. Over any five-year period, about one in eight households will receive the questionnaire, as compared to about one in six that received the long form questionnaire for the Decennial Census 2000. (Source: <http://mcdc.missouri.edu/pub/data/acs/Readme.shtml>) The U.S. Census Bureau provides help with this process:

http://www.census.gov/acs/www/guidance_for_data_users/comparing_2015/

Use caution when interpreting changes in Race and Ethnicity over time. Starting with the 2000 Decennial Census, respondents were given a new option of selecting one or more race categories. Also in 2000, the placement of the question about Hispanic origin changed, helping to increase responsiveness to the Hispanic-origin question. Because of these and other changes, the 1990 data on race and ethnicity are not directly comparable with data from later censuses. (Source: <http://www.census.gov/prod/2001pubs/c2kbr01-1.pdf>;
<http://www.census.gov/pred/www/rpts/Race%20and%20Ethnicity%20FINAL%20report.pdf>)

The "Minority" calculations are derived from Census and ACS data using both the race and ethnicity responses. On this report, "Minority" refers to individuals who list a race other than White and/or list their ethnicity as Hispanic/Latino. In other words, people who are multi-racial, any single race other than White, or Hispanic/Latino of any race are considered minorities.

Disability data is not included in the 2010 Decennial Census, or the 2006-2010 ACS. This data is available in the 2011-2015 ACS.

Because of changes made to the Census and ACS questions between 1990 and 2015, disability variables should not be compared from year to year. For example: 1) With the 1990 data the disabilities are listed as a "work disability" while this distinction is not made with 2000 or 2015 ACS data; 2) The 2015 ACS data includes the institutionalized population (e.g. persons in prisons and group homes), while this population is not included in 1990 or 2000; 3) the age groupings changed over the years.

Please take the following two concerns into account when viewing this data: 1) With the 1990 data the disabilities are listed as a "work disability" while this distinction is not made with 2000 or 2015 ACS data; 2) The 2015 ACS data includes the institutionalized population (e.g. persons in prisons and group homes), while this population is not included in 1990 or 2000.

source:

<https://www.census.gov/people/disability/methodology/acs.html>

<https://www.census.gov/population/www/cen2000/90vs00/index.html>

The category Bachelor's Degree or Higher under the heading Educational Attainment Trends is a subset of the category High School Graduate or Higher.

Metadata

- Community and Fraternal Centers https://etdmpub.florida-etat.org/metadata/gc_communitycenter.htm
- Correctional Facilities in Florida https://etdmpub.florida-etat.org/metadata/gc_correctional.htm
- Cultural Centers in Florida https://etdmpub.florida-etat.org/metadata/gc_culturecenter.htm
- Fire Department and Rescue Station Facilities in Florida https://etdmpub.florida-etat.org/metadata/gc_firestat.htm
- Local, State, and Federal Government Buildings in Florida https://etdmpub.florida-etat.org/metadata/gc_govbuild.htm
- Florida Health Care Facilities https://etdmpub.florida-etat.org/metadata/gc_health.htm
- Hospital Facilities in Florida https://etdmpub.florida-etat.org/metadata/gc_hospitals.htm
- Law Enforcement Facilities in Florida https://etdmpub.florida-etat.org/metadata/gc_lawenforce.htm
- Florida Parks and Recreational Facilities https://etdmpub.florida-etat.org/metadata/gc_parks.htm
- Religious Centers https://etdmpub.florida-etat.org/metadata/gc_religion.htm
- Florida Public and Private Schools https://etdmpub.florida-etat.org/metadata/gc_schools.htm
- Social Service Centers https://etdmpub.florida-etat.org/metadata/gc_socialservice.htm
- Assisted Rental Housing Units in Florida https://etdmpub.florida-etat.org/metadata/gc_assisted_housing.htm
- Group Care Facilities <https://etdmpub.florida-etat.org/metadata/groupcare.htm>
- Mobile Home Parks in Florida https://etdmpub.florida-etat.org/metadata/gc_mobilehomes.htm
- Migrant Camps in Florida <https://etdmpub.florida-etat.org/metadata/migrant.htm>
- Veteran Organizations and Facilities https://etdmpub.florida-etat.org/metadata/gc_veterans.htm
- Generalized Land Use - Florida DOT District 7 https://etdmpub.florida-etat.org/metadata/d7_lu_gen.htm
- Census Block Groups in Florida https://etdmpub.florida-etat.org/metadata/e2_cenacs_cci.htm
- 1990 Census Block Groups in Florida https://etdmpub.florida-etat.org/metadata/e2_cenblkgrp_1990_cci.htm
- 2000 Census Block Groups in Florida https://etdmpub.florida-etat.org/metadata/e2_cenblkgrp_2000_cci.htm
- 2010 Census Block Groups in Florida https://etdmpub.florida-etat.org/metadata/e2_cenblkgrp_2010_cci.htm